



## ERIS | SERIES: ERIIS (ECOLine)

MULTI-PURPOSE CLIMATE CHAMBER WITH TEMPERATURE AND HUMIDITY CONTROL DESIGNED FOR PHARMACEUTICAL, COSMETIC, FOOD, ETC STABILITY TESTS.

### CONFIGURATION

GROSS CAPACITY IN LITERS: 150 | 250 | 450 | 850 | 1340

### GENERAL SPECIFICATIONS

Designed for the study of laboratory climates, pharmaceutical stability, cosmetics, food, R&D&I, microbiology, biotechnology, biochemistry, construction, cardboard, adhesives, electronics, etc.

Horizontal air flow, from the sides, uniform on all shelves, with speed regulation approx. 0.2 – 0.8m/s.

#### TEMPERATURE CONTROL ERIS MODELS

Temperature range from +10°C to +55°C, with lights on/off.

#### HUMIDITY AND TEMPERATURE CONTROL ERIS HR MODELS

Humidity control: Working range from 30% to 95% R.H (+/- 3%). With lights off and on.

### TECHNICAL SPECIFICATIONS

Temperature control panel and other parameters with 3.4 "TFT graphic display.

Ultrasonic humidity generator and horizontal airflow recirculation system.

Safety thermostat, avoids exceeding the temperature.

Electronic probe to measure humidity (4-20 mA) with precision / stability of +/- 3%.

### OTHER SPECIFICATIONS

Homogeneity of +/-1.0 at 27°C and +/- 1.5 at 40°C inside the chamber.

Stability in the chamber +/-0.3°C. at 27°C and +/-0.5°C, at 40°C inside the chamber.

Humidity stability: +/- 3%, in a temperature range +20°C to +45°C..



Modelo: ERI



Modelo: ERIS

### CONTROL

4500 series controller, with graphic display of temperature and/or humidity, intuitive and simple user control.  
NANODAC control option. ERI INOX ICH models.

7.0" TFT backlit graphic display.

Acoustic and visual alarm.

3 levels of numerical password protection (user, supervisor, technical service), with reprogrammable PIN codes.

Back-up battery, with automatic recharge, guaranteeing autonomy for 48 or 72 hours.

### CONSTRUCTION

#### EXTERIOR

Epoxy coated steel. 4 height adjustable feet.

#### INTERIOR

AISI304 stainless. Rounded corners and interior drainage.

#### DOOR

Blind door with handle and key lock. 6mm thermal glass internal door.

#### POWER

220-240V /1 F/ 50 Hz. 1.5 m cable with Schuko connector.

#### SHELVES

In stainless steel. perforated + height-adjustable guides. Max load 100 kg/m2.

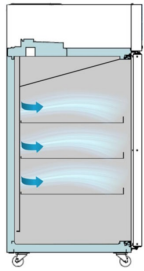
#### COOLING

Forced air ventilation. Cold control controlled by solenoid valve.

### AN EQUITEC' SOLUTION



## DETAILS



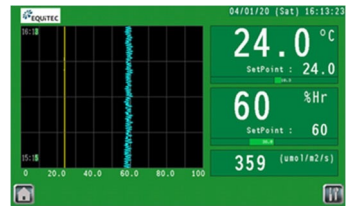
Air flow view



Interior shelves



Glass door



Detail: control

## OPTIONAL ACCESORIES

Optional negative temperatures: +4°C/ 0°C / -5°C /-10°C /-20°C /-30°C

Extended drying capacity up to +10% RH, with additional air dryer.

Data recording according to FDA 21 CFR part regulations.

Cold white and near-UV LED tubes for photo-stability tests. (OPTION II, from the ICH Q1B standard)

Light radiation sensor, for control and recording of light parameters.

Additional trays.

Telescopic trays, with extraction system.

Additional pass ports for cables and tubes

20 liter external water tank with electric pump and safety valve for the humidifier feed water.

Continuous demineralization system for the humidifier feed water.

Internal sockets.

Potential-free output for remote alarm control (4-20 mA).

GSM alarm module.

RS485/232 remote communication system.

Communication software for PC on request.

UV light tube for sterilization.

CO2 control and supervision units.

Water cooled condensing unit.

Digital printer for temperature and/or humidity.

Ethernet output for remote connection via WiFi network and dedicated website, makes it possible to read and change parameters.

Bio-decontamination with hydrogen peroxide: allows the connection of an H2 O2 atomizer system.

Thermal decontamination system at 60°C.

7-day circular temperature/humidity recorder, with independent battery to work even in case of power failure. Includes 100 charts (approx. for 1.5 years.).

Additional Data loggers.

UV light tube for sterilization.

CO2 control and supervision units.

## DETAILED INFORMATION ABOUT THE PRODUCT

Through the following link. [Click aquí.](#)

Phone call. [Click aquí.](#)

Contact via email. [Click aquí](#)