

WALK-IN CHAMBERS

Larger designs with large capacities for large batches of samples. It presents a completely customized design based on the client's existing space. Control of different variables, temperature, humidity, light intensity, CO₂, irrigation, etc., according to customer specifications.

CONFIGURATION

GROSS CAPACITY IN LITERS:
From 2.000 to 60.000 liters

GENERAL SPECIFICATIONS

Designed for all types of applications where temperature and/or humidity control is necessary in different sectors.

Applications: Pharmaceutical stability, Plant growth, Arabidopsis, Stability control in foods and beverages. Algae growth. Drosophila or Entomology. Small animal husbandry.
Low temperature chambers with photoperiod. Tissue culture. Refrigerated incubators. Seed drying chambers. Forensic, etc.

TEMPERATURE CONTROL
Temperature range from +4°C to +60°C.

TEMPERATURE AND HUMIDITY CONTROL
Humidity control: working range from 30% to 98% R.H.

TECHNICAL SPECIFICATIONS

Temperature control panel and other parameters with 7.0 "TFT touch screen.

Ultrasonic humidity generator and horizontal airflow recirculation system. (EGCS ALG HR)

Safety thermostat, avoids exceeding the temperature.

Electronic probe to measure humidity (4-20 mA) with precision / stability of +/- 3%.

TECHNICAL SPECIFICATIONS OF THE LIGHTS

Possible light positions: on door (LED), on door and rear (2S) or on trays (1/2/3/4 L).

2 independent LED light channels with one-to-one regulation: Channel 1 warm white light. Channel 2 cool white light.

Light intensity control from 10 to 180 $\mu\text{Mol/m}^2 \times \text{s PAR}$. Optionally up to 1,800 $\mu\text{Mol/m}^2 \times \text{s}$

AN EQUITEC' SOLUTION



CONTROL

4500 series controller, with graphical temperature and/or humidity display, intuitive and simple user control.

7.0" TFT backlit graphic display.

Acoustic and visual alarm.

3 levels of numerical password protection (user, supervisor, technical service), with reprogrammable PIN codes.

Back-up battery, with automatic recharge, guaranteeing autonomy for 48 or 72 hours.

CONSTRUCTION

EXTERIOR

Galvanized sheet with epoxy finish..

INTERIOR

AISI304 stainless or interior lacquered, with sanitary profile included.

DOOR

Pivoting door with dimensions 800 x 1830 mm (width x height). Automatic closing with key lock and internal security opening.

FLOOR

100 mm non-slip floor in AISI 304 stainless steel.

ISOLATION

CFC-free polyurethane, high pressure injected with a density of 45 kg/m³.

PORT

40 mm cable gland with plug.

COOLING

Forced air ventilation. Cold control controlled by solenoid valve.

SENSORS

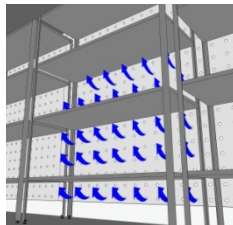
PT100 for temperature sensor and capacitive humidity probe.

SHELVES

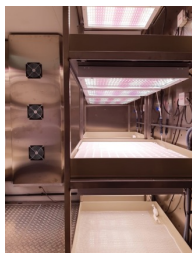
Optional. Made of stainless steel or duroaluminum with interchangeable height-adjustable shelves.



DETAILS



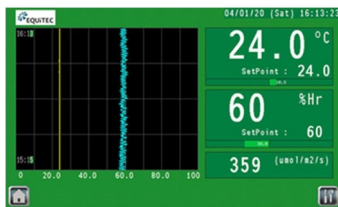
Air flow view



Interior shelves



Detail: lights on shelves



Detail: control



Interior detail

OPTIONAL ACCESORIES

All our equipment has different optional elements to be able to meet the client's maximum needs and be able to deliver equipment prepared for their real requirements. Depending on the application for which the chamber is intended, the accessories may vary.

Consult your testing requirements with our technical department so that they can advise you on the different optional elements that may interest you..

Optional negative temperatures: -5°C /-10°C /-20°C /-30°C / +70°C / +80°C..

Extended drying capacity up to +10% RH, with additional air dryer.

Condensing unit cooled by water or glycolated water,

CO2 control and supervision units.

CO2 scrubber to reduce carbon dioxide below ambient levels.

Simulation of fog or spray would lack its own point, I think it should go after this Risk systems.

Thermal decontamination system at 60°C

Bio-decontamination with hydrogen peroxide: allows the connection of an H2 O2 atomizer system

Automatic irrigation valve

Phenolic resin coating for entomology/insect breeding applications.

Continuous demineralization system for humidifier feed water.

Additional grommet for cables and tubes

Internal sockets..

Aeration kit for algae research and hydroponic crops

RS485/232 remote communication system.

Potential free output for remote alarm control (4-20 mA)

Communication software for PC on request.

GSM alarm module.

Ethernet output for remote connection via WiFi network and dedicated website, makes it possible to read and change parameters..

Digital printer for temperature and/or humidity.

7-day circular temperature/humidity recorder, with independent battery to work even in case of power failure. Includes 100 charts (approx. for 1.5 years).

Additional data loggers.

DETAILED INFORMATION ABOUT THE PRODUCT

Through the following link. [Click aquí.](#)

Phone call. [Click aquí.](#)

Contact via email. [Click aquí..](#)